



**101 N MAIN**  
ANN ARBOR

**LARGEST** CLASS A  
OFFICE BUILDING &  
***MOST PRESTIGIOUS***  
ADDRESS IN DOWNTOWN  
ANN ARBOR



**REDICO**



## WELCOME TO 101 N MAIN

Located at the intersection of Main Street and East Huron, just blocks away from the University of Michigan Central Campus, 101 North Main is the largest Class A office building in Downtown Ann Arbor, Michigan.

With its superior access, strong labor force and an ample selection of available amenities, 101 North Main is an exceptional choice for corporate executives and start-ups alike.



**Flexible range of leasing opportunities available**



**On-site parking available**



**Prime destination for tech users**



**Flexible floor plans**



**Surrounded by walkable amenities**



**On-site management**

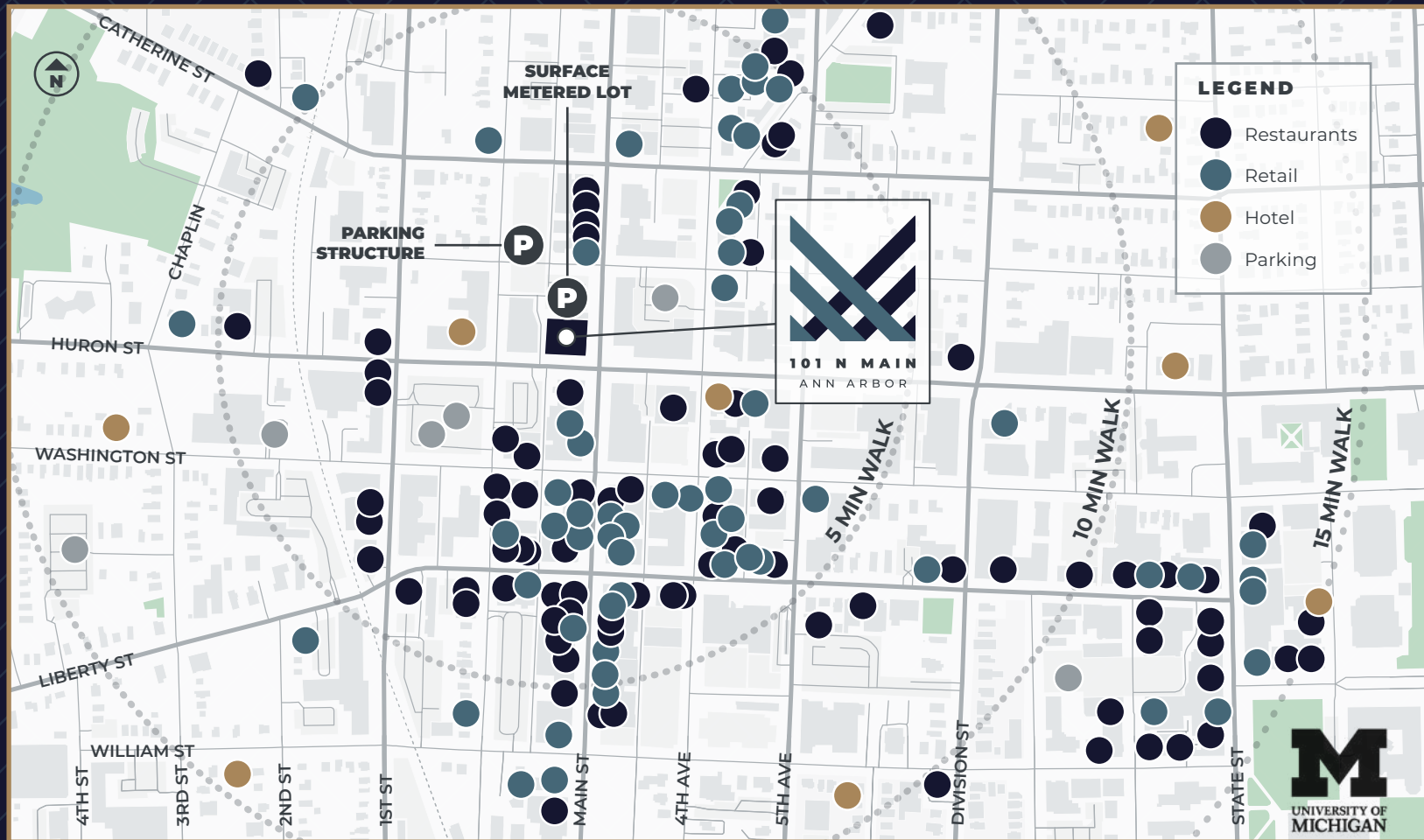




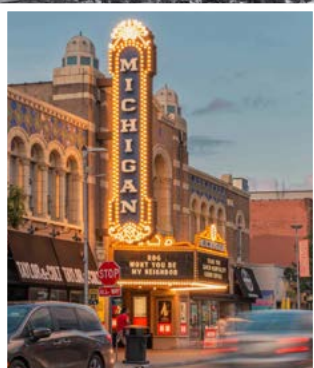


## SURROUNDED BY AN ABUNDANCE OF AMENITIES

101 North Main is a block away from the most vibrant and exciting district of Downtown Ann Arbor – filled with fine dining options, unique meeting spaces, cocktail bars, art galleries, music venues and unique retailers.







MICHIGAN THEATER

WASHENTAW COUNTY COURTHOUSE

ANN ARBOR DOWNTOWN  
DEVELOPMENT AUTHORITY



101 N MAIN  
ANN ARBOR



SURFACE  
METERED LOT

PARKING  
STRUCTURE

COUNTY ANNEX

COUNTY CLERK & TREASURER

ANN ARBOR CITY HALL

SHOP, EAT AND EXPLORE OPTIONS IN ANN ARBOR'S MAIN STREET DISTRICT & BEYOND





## 8TH FLOOR | AVAILABLE FALL 2024



4 Balconies provide an outdoor retreat



Spacious employee lounge and kitchen



Conference and huddle areas



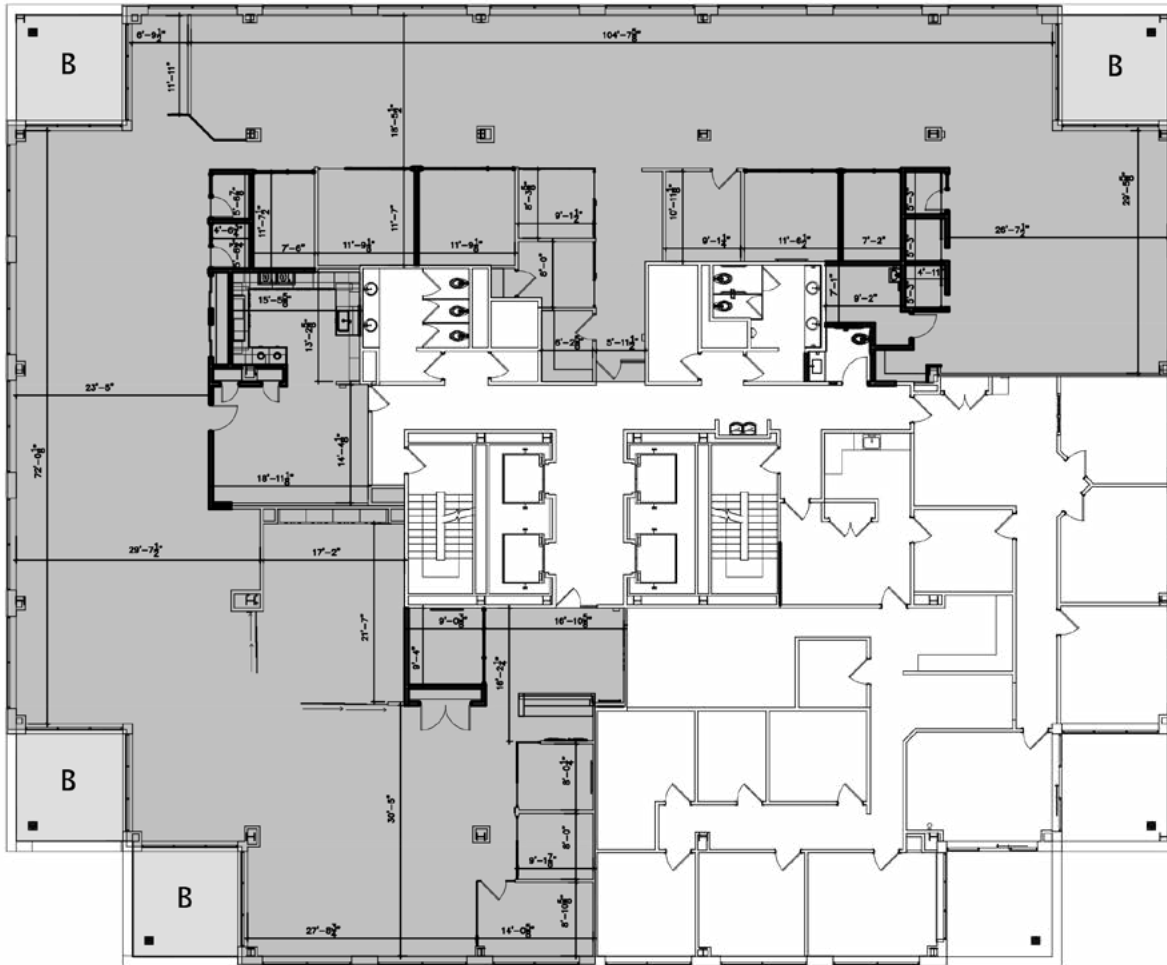
Parking available



Professionally managed building with upgraded lobbies, restrooms, and common areas



# FLOOR PLAN: 11,076 SF



Take an Interactive Tour



## FIRST FLOOR RETAIL

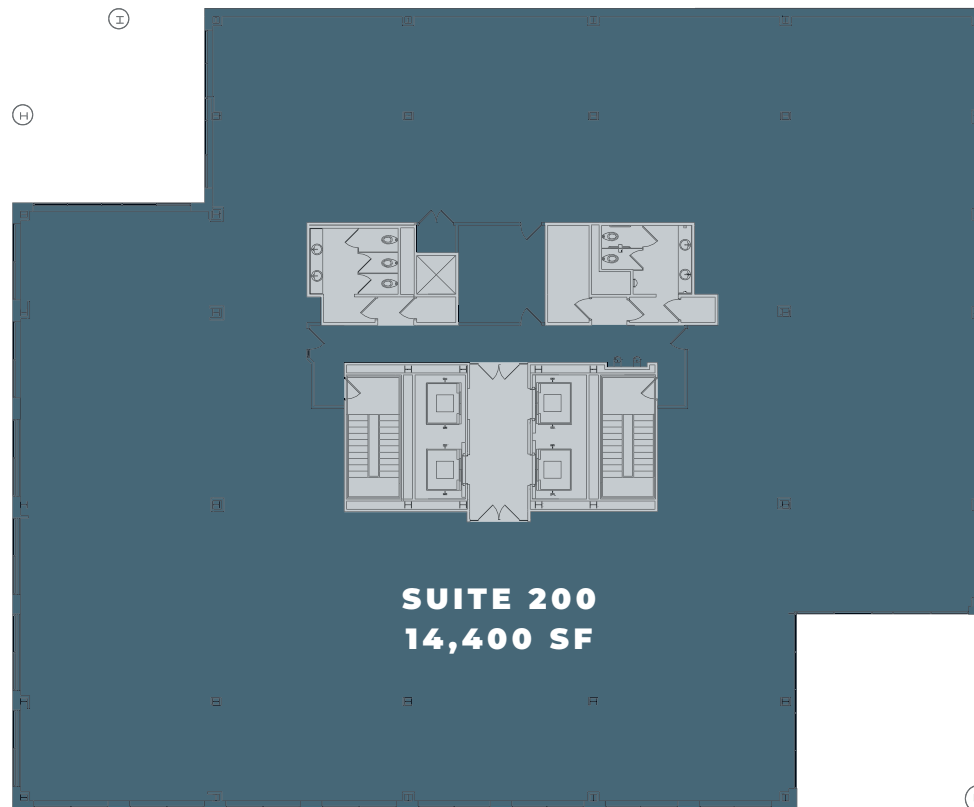
SUITE 130 - 2,782 SF





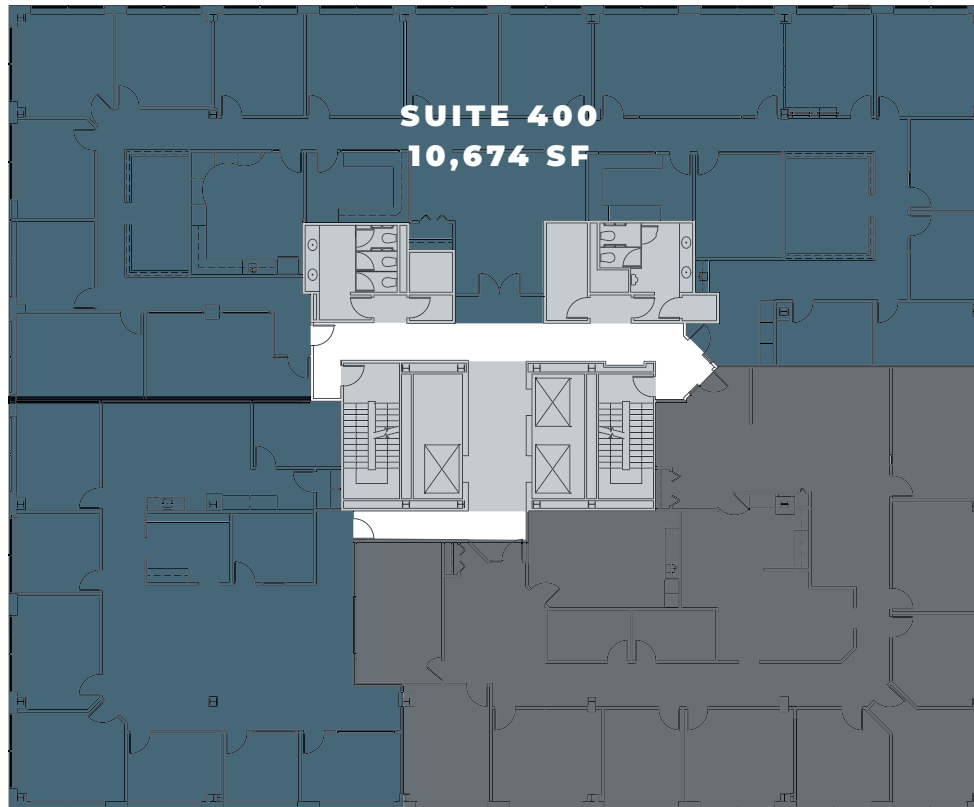
## **SECOND FLOOR OFFICE**

SUITE 200 - 14,400 SF



## FOURTH FLOOR OFFICE

SUITE 400 - 10,674 SF





## **FIFTH FLOOR OFFICE**

SUITE 555 & 565 - 7,653 SF





Today REDICO continues to evolve, adapt and excel just as quickly as the changes and challenges of our industry. We have built upon a heritage of successful development, investment and management expertise.

With hands-on involvement by our executive team – in every line of our business and on every project – we apply our 50 years of experience on a vast array of property types across the country.

As a full-service commercial real estate company, our commitment is reflected in both our national awards and our track record of quality development, trophy asset acquisition and the superior property management we deliver to our clients, partners and investors.

Visit [redico.com](#) for more information.











**101 N MAIN**  
ANN ARBOR

## **CONTACT**

**NEAL WARLING**

+1 734 769 3201  
neal.warling@jll.com

**KELLY FISHER**

+1 734 769 3203  
kelly.fisher@jll.com



**REDICO**

